



CH2



**RIDOTTO
IMPATTO
AMBIENTALE**



**CARICA OTTIMALE
DELLA
BATTERIA**



**TECNOLOGIA
SiC MOS EFFICIENZA
SUPERIORE
AL 90%**



**MAGGIORE
DURATA DELLA
BATTERIA**



A FAMILY OF MODULAR CHARGERS
WITH PROGRAMMABLE CHARGING PROFILES FOR
EVERY BATTERY TECHNOLOGY

The CH2 is a family of three-phase, modular, high-frequency battery chargers, with programmable profiles, for any type of battery and ready for use with Lithium Ion thanks to its CAN bus communication. The modular system is easy to maintain. The Can Bus protocol can be customized to meet the specifications of the battery BMS.

**BATTERY
CHARGE
Innovation**

Ideal for:



MATERIAL HANDLING



FLOOR CARE MACHINES



SHORT-HAUL VEHICLES

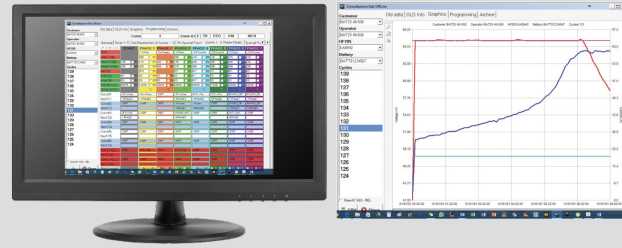


GREEN ENERGY TECHNOLOGY

TECHNICAL SPECIFICATIONS

FEATURES

- Three-phase battery charger
- High-Frequency Switching Technology High-efficiency technology and new technical design for optimal thermal performance of the battery
- Programmable via front panel or USB Type A/B port
- Suitable for Lead-Acid Batteries, Sealed eGEL Traction, AGM, Lithium-Ion
- CAN/CAN-OPEN communication for lithium batteries
- High efficiency over 90%
- Various power configurations available
- Multi-current configuration
- Charging curves customizable via software • Data and Graph Memory last 150 charging cycles
- HF View software even
- Modular system (3 or 4 configurable modules) Power up to 21 kW, up to 300A @ 48V, up to 200 @ 80V, up to 150A @ 96V Programmable via USB type A/B port or via display • Graphic display



AVAILABLE MODELS

Volt	Amp.	IUla Wet 8h		IUla Wet 12h		IUla Gel PzV 10-14h		BOX
		Capacità C5 Ah (7-8h)		Capacità C5 Ah (9-11h)		Capacità C5 Ah (10-14h)		
Vdc	Adc	Min	Max	Min	Max	Min	Max	Type
24	50	280	345	450	550	345	425	G6
24	60	336	414	540	660	414	510	G6
24	70	392	483	630	770	483	595	G6
24	80	448	552	720	880	552	680	G6
24	100	560	690	900	1100	690	850	G6
24	120	672	828	1080	1320	828	1020	G6
24	150	840	1035	1350	1650	1035	1275	G6
24	160	896	1104	1440	1760	1104	1360	G8
24	180	1008	1242	1620	1980	1242	1530	G8
24	200	1120	1380	1800	2200	1380	1700	G8
24	220	1232	1518	1980	2420	1518	1870	GX
24	250	1400	1725	2250	2750	1725	2125	GX
24	280	1568	1932	2520	3080	1932	2380	GX
24	300	1680	2070	2700	3300	2070	2550	GX
36	50	280	345	450	550	345	425	G6
36	60	336	414	540	660	414	510	G6
36	70	392	483	630	770	483	595	G6
36	80	448	552	720	880	552	680	G6
36	100	560	690	900	1100	690	850	G6
36	120	672	828	1080	1320	828	1020	G6
36	150	840	1035	1350	1650	1035	1275	G6
36	160	896	1104	1440	1760	1104	1360	G8
36	180	1008	1242	1620	1980	1242	1530	G8
36	200	1120	1380	1800	2200	1380	1700	G8
36	220	1232	1518	1980	2420	1518	1870	GX
36	250	1400	1725	2250	2750	1725	2125	GX
36	280	1568	1932	2520	3080	1932	2380	GX
36	300	1680	2070	2700	3300	2070	2550	GX
48	50	280	345	450	550	345	425	G6
48	60	336	414	540	660	414	510	G6
48	70	392	483	630	770	483	595	G6
48	80	448	552	720	880	552	680	G6
48	100	560	690	900	1100	690	850	G6
48	120	672	828	1080	1320	828	1020	G6
48	130	728	897	1170	1430	897	1105	G6
48	150	840	1035	1350	1650	1035	1275	G6
48	160	896	1104	1440	1760	1104	1360	G8
48	180	1008	1242	1620	1980	1242	1530	G8
48	200	1120	1380	1800	2200	1380	1700	G8
48	220	1232	1518	1980	2420	1518	1870	GX
48	250	1400	1725	2250	2750	1725	2125	GX
48	280	1568	1932	2520	3080	1932	2380	GX
48	300	1680	2070	2700	3300	2070	2550	GX

Volt	Amp.	IUla Wet 8h		IUla Wet 12h		IUla Gel PzV 10-14h		BOX
		Capacità C5 Ah (7-8h)		Capacità C5 Ah (9-11h)		Capacità C5 Ah (10-14h)		
Vdc	Adc	Min	Max	Min	Max	Min	Max	Type
72	30	280	345	450	550	345	425	G6
72	40	336	414	540	660	414	510	G6
72	50	392	483	630	770	483	595	G6
72	60	448	552	720	880	552	680	G6
72	80	560	690	900	1100	690	850	G6
72	100	672	828	1080	1320	828	1020	G6
72	110	840	1035	1350	1650	1035	1275	G6
72	120	896	1104	1440	1760	1104	1360	G8
72	130	1008	1242	1620	1980	1242	1530	G8
72	150	1120	1380	1800	2200	1380	1700	G8
72	160	1232	1518	1980	2420	1518	1870	GX
72	180	1400	1725	2250	2750	1725	2125	GX
72	200	1568	1932	2520	3080	1932	2380	GX
80	30	1680	2070	2700	3300	2070	2550	GX
80	40	280	345	450	550	345	425	G6
80	50	336	414	540	660	414	510	G6
80	60	392	483	630	770	483	595	G6
80	80	448	552	720	880	552	680	G6
80	100	560	690	900	1100	690	850	G6
80	110	672	828	1080	1320	828	1020	G6
80	120	840	1035	1350	1650	1035	1275	G6
80	130	896	1104	1440	1760	1104	1360	G8
80	150	1008	1242	1620	1980	1242	1530	G8
80	160	1120	1380	1800	2200	1380	1700	G8
80	180	1232	1518	1980	2420	1518	1870	GX
80	200	1400	1725	2250	2750	1725	2125	GX
96	20	1568	1932	2520	3080	1932	2380	GX
96	25	1680	2070	2700	3300	2070	2550	GX
96	30	280	345	450	550	345	425	G6
96	40	336	414	540	660	414	510	G6
96	50	392	483	630	770	483	595	G6
96	60	448	552	720	880	552	680	G6
96	70	560	690	900	1100	690	850	G6
96	75	672	828	1080	1320	828	1020	G6
96	80	728	897	1170	1430	897	1105	G6
96	100	840	1035	1350	1650	1035	1275	G6
96	125	896	1104	1440	1760	1104	1360	G8
96	150	1008	1242	1620	1980	1242	1530	G8

DIMENSIONI (LxWxH) mm

G6 : 348x666x218; 37,5Kg
 G8 : 448x666x218; 43,3Kg
 GX : 348x666x400; 61Kg

CERTIFICATIONS

CE CERTIFICATIONS
 SICUREZZA: CEI EN60335-1
 EMC: CEI EN61000-6-2 CEI EN61000-6-3
 CEI EN62233
 cULuc, cRUus: UL1564

WARRANTY

12 months

MODELS

Other models available on request for different Battery Voltages, Charging Currents, Power Supply Voltages.

Green Energy Technology s.r.l.

Via Milano, 64 - Magenta 20013 (MI)
 Sede operativa: Via Matteotti 39F - Roccarainola 80030 (NA)
 info@get-group.it

Made in Italy

